



iReliev®

iReliev® Relaxable™ Pillow Massager



Available in these colors:



INDICATIONS

Read this instruction manual before operation. Be sure to comply with all CAUTIONS and WARNINGS in this manual. Failure to follow and implement according to the use and operating instructions can cause harm to the user or device.

This device is suitable for physical massage to temporarily relieve pain and reduce soreness.

WARNING

The iReliev® Relaxable™ Pillow Massager is not intended for medical use. Consult your doctor prior to using this product if you are pregnant, have a pacemaker or if you have any concerns regarding your health.

Model Numbers	Color
Model # MA-9000-BK	Black
Model # MA-9000-BL	Blue
Model # MA-9000-GR	Gray
Model # MA-9000-PK	Pink



Thank you for purchasing the iReliev® Relaxable™ Pillow Massager

Please read this manual carefully before use to ensure proper operation.
Please keep this manual in a safe place for future reference.

TABLE OF CONTENTS

Warnings.....	2
What's Included.....	3
About Rechargeable Batteries.....	4
Product Description.....	5
Operation Guide.....	6
Specifications.....	7
Troubleshooting Guide.....	8
You May Also Like.....	9-14

⚠ WARNINGS

To reduce the risk of malfunction, electric shock, injury, fire, death, and equipment damage, please read all instructions and warnings carefully before using this product.

1. If the massage intensity feels too strong, you can place a towel or blanket between your body and the massage pillow to reduce intensity.
2. To extend the life of the massager, please allow a 15-minute cool down after 30 minutes of use.
3. Do not pull on the wire when unplugging charger from the device.
4. Please use the original factory adapter for charging to avoid fire or damage to the product.
5. Do not operate device in dusty or damp environments.
6. Do not place device near steam, heat or fire.
7. Do not place device in direct sunlight.
8. Consult your doctor prior to use if you recently had surgery or an injury.
9. Do not disassemble this product in any way.
10. If adapter wire is damaged, do not disassemble or replace it. Contact iReliev® Customer Service for assistance.
11. Device is NOT intended for use in by those under 18.

NOTE:

Do not use this product without your physician's consent if you have a serious health condition that could be contraindicated.

WHAT'S INCLUDED?

Contents:

- iReliev® Relaxable™ Pillow Massager
- Wall charger



ABOUT RECHARGEABLE BATTERIES

- Disconnect the device from the power supply before removing the battery.
- Remove the battery from the device.
- Dispose of battery properly.

WARNING:

For the purposes of recharging the battery, only use the detachable supply unit provided with this device.

Do not allow children to play with or use this device.

PRODUCT DESCRIPTION



Our pillow massager will ease your tension at the push of a button. This stylish pillow comes in your choice of four beautiful color options. The back is covered with a coordinating mesh fabric. The classic design makes it the perfect accent for any home or office decor.

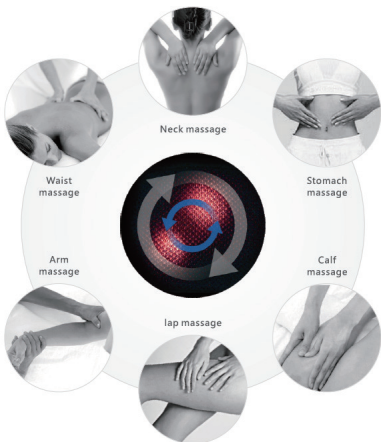
With multiple speeds and pressure settings, you can relieve tight muscles or simply relax any time, day or night. Plus, since it's rechargeable and cordless, you can take it anywhere.

OPERATION GUIDE

1. Insert charger cable into the DC output of the massage pillow.
2. Insert the charger into your power outlet.
3. The charger light will display as RED to indicate it is charging. The full charging cycle is 3 hours.
4. The charger light will display as YELLOW when the device is fully charged. Massager will operate approximately 2 hours per full charge.
5. Hold the ON/OFF switch for three seconds to turn the massage pillow on. The massager will shut off automatically after 10 minutes of use to help save battery power. To continue using, turn the pillow back on.
6. Press the ON/OFF button until the red light comes on to indicate the heat function is active. Press the button again to turn off the heat function.
7. Hold the ON/OFF button for three seconds to stop the massager.

NOTE:

The massager can temporarily relieve muscle tension, aches, reduce fatigue, and increase blood circulation.



SPECIFICATIONS

Product Name: iReliev® Relaxable™ Pillow Massager	Rated Voltage: 110-220v
Size: 16" x 8" x 19"	Rated Power: 38W
Color Choice: Grey/Pink/Blue/Black	Battery Specs: 2200Ma, 19v Lithium Battery
Charging time: About 3 hours	NW: 3.1 lbs
Intended for use by adults 18 and over	

NOTE:

If the charger becomes damaged, you must replace it with a charger of the same specifications to ensure safety of yourself, others, and the device (DC-12.6V).

TROUBLESHOOTING GUIDE

Problems/Issues	Problems/Issues	Troubleshoot Method
Sounds like tapping or humming noise	The sound of the motor is working normally	Normal
Massager making strange noise	Strange noise continues for 30 minutes	Turn off for 1 hour
Massager is overheating	Prolonged use causes massager to overheat	Let the massager cool off and try again
Suddenly stops working	1 - No charge 2 - Malfunction in machine	1 - Charge battery 2 - Restart the machine

For any issues not described above, please contact our Customer Service Department by calling **855-723-2582** or emailing **WeCare@iReliev.com**

NOTE: Do not dismantle the product by yourself. We are not responsible for damage of the product, or persons, caused by improper use. Thank you for your cooperation.

YOU MAY ALSO LIKE THESE OTHER
IRELIEV® PRODUCTS

Wireless

Premium TENS + EMS Therapeutic Wearable System

Experience the freedom of wireless TENS + EMS muscle stimulation coupled with powerful medical-grade strength technology and a low-profile design. The convenience and simplicity of this system make it the clear leader within the iReliev® line-up of pain relief and muscle stimulation devices.

Model # ET-5050





Wired

Premium TENS + EMS Pain Relief & Recovery

Our best-selling 2-in-1 Pain Relief & Recovery System just got better. It combines the best features of our previous TENS + EMS system with the added benefits of rechargeability and an extra-large lighted digital display.



Model # ET-8080



Reusable & Versatile

Hot & Cold Therapy Gel Pack

Soothe your strains and pain with our reusable microwaveable hot/cold pack. Heated or frozen, our product stays flexible for ease of use. Our packs are made of soft-touch vinyl. Use the included velcro strap to secure the pack to your arm or leg.



Comes in 3 sizes



Relaxable™ Series

Relaxable™ Foot Massager Ottoman

This beautiful multipurpose piece of furniture delivers style and comfort to any room. You'll enjoy the benefits of a relaxing massage without leaving the comfort of your favorite chair.



Comes in 3 colors



Joint & Muscle Ache Relief

Pain Relief Roll-on Gel

We know you will love our all-natural Pain Relief Gel. It is perfect for soothing aches and pains or just sore muscles. It comes in your choice of 3 oz. Roll-on or single-use packets. Try it today.



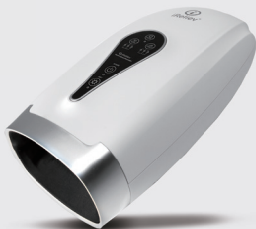
Model # TO-3RO



Relief and Relaxation

Hand & Wrist Massager

You will enjoy this gentle, warming massage. It is perfect for soothing arthritis, carpal tunnel syndrome, and general fatigue or achiness from overuse.



Model # MA-7000-WH



iReliev[®]

ExcelHealth Inc.

www.iReliev.com

5825 Park Vista Circle
Fort Worth, TX 76244

If you have questions about your
iReliev[®] Relaxable[™] Pillow Massager
Contact your Reseller or ExcelHealth Inc. at:
855-723-2582 or visit www.iReliev.com

